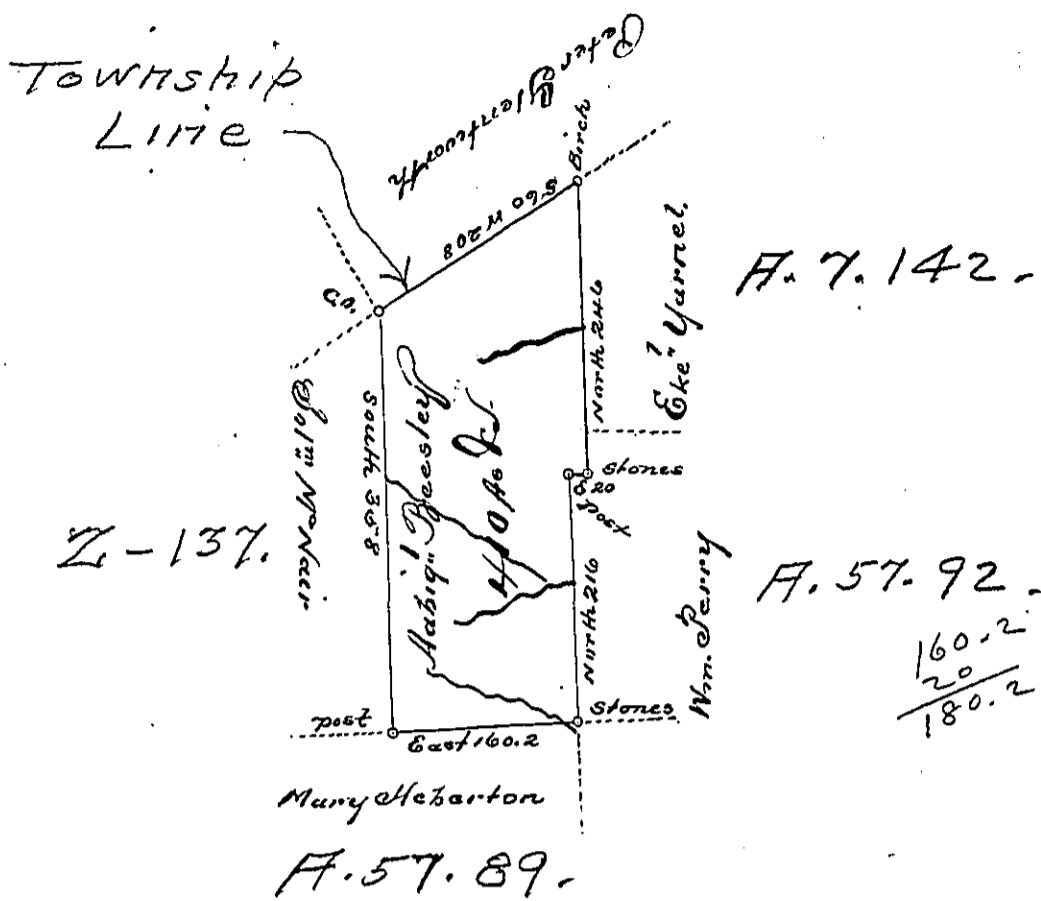


Foster -
Luzerne.



A Draft of a tract of Land Called Situate on some of the head springs of Lehi & Nescopeck in the County of Luzerne Containing Four Hundred & ten acres & Allors. Surveyed for Abigail Beasley the 14th day of June 1793. in pursuance of a warrant dated the 24th day of Decr. 1792.

Daniel Brodhead Esq.
Surr. Gen.

by Wm Gray D. J.

IN TESTIMONY that the above is a copy of the original remaining on file in the Department of Internal Affairs of Pennsylvania, made conformably to an Act of Assembly approved the 16th day of February, 1833, I have hereunto set my Hand and caused the Seal of said Department to be affixed at Harrisburg, this sixth day of August 1895

James W. Latta
Secretary of Internal Affairs.